

2020

# Our Communities & People

DERWENT  
LONDON



**Time to Talk days at The White Chapel Building E1**  
Such events offer a range of physical and wellbeing-focused activities for our occupiers ranging from a 'food disco', yoga, consultations on pain and injury to an introduction on mental health awareness.

## Contents

2—3  
Introduction

4—5  
Our Community Fund

6—7  
Our sponsorships  
and donations

8—9  
Our volunteering

10—11  
Supporting the NHS

12—13  
Overview



# Introduction



## Literacy Pirates

Young authors' book project  
An inspiring new initiative to  
spark children's imaginations

## Supporting our Community

Investing in long term relationships with community groups has always been key for us, and none more so than in 2020. Our Community Fund continued to support groups in our neighbourhoods. Volunteering continued too, albeit in new ways. Local groups have proved beyond doubt their value to their community in their strength and determination to keep going throughout 2020 and we have been proud to have supported them. The following pages highlight just some of the projects that have taken place. In 2020 our budget for charitable giving increased by 179% to £1.1m, including £186,000 paid for by waiver of 20% of Directors' salaries.

# Our Community Fund

For 2020 our Community Fund extended its guidelines in order to consider applications for core funding as well as grass roots projects in recognition of and response to the extra assistance charities and local groups needed during this most extraordinary of years. The result of this was being able to support a variety of initiatives that not only positively impacted communities here and now but also sustained groups until they could safely operate once again. In total during 2020, £97,000 was awarded to 18 projects across the two funds.

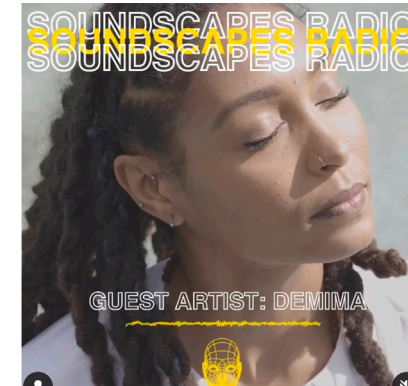
DERWENT  
LONDON  
**COMMUNITY FUND**

## £750,000

Invested in the  
Fund to date

## 110

Projects supported  
since 2013



← Tech Belt Fund 2020  
Soapbox  
Soundscapes

Tech Belt Fund 2020  
Literacy Pirates  
Young authors' book project



↑ Fitzrovia & West  
End Fund 2020  
Fitzrovia Youth  
in Action  
Warren Street  
Centre Youth  
Social Action



↑ Fitzrovia & West End Fund 2020  
Mousetrap Theatre Projects  
Core funding

# Our sponsorships and donations

In 2020 our Sponsorships and Donations Committee continued to focus on mental health and homelessness and funded the refurbishment of a counselling room within The Soup Kitchen in Fitzrovia; which was also a collaborative effort alongside TTP on the build and AHMM as architects on a pro bono basis.

In 2020 a total of £534,000 was given to charities and groups in our wider community. In a direct response to Covid-19 £50,000 was committed to groups helping the most vulnerable such as soup kitchens, homeless outreach and groups supporting the elderly.

A further £10,000 was given specifically to charities that were nominated by Derwent staff as causes close to their heart.



**PETS AS THERAPY**



**CHICKENSHEDED**  
THEATRE CHANGING LIVES

**NORWOOD**

**1928**  
PROJECT



**MACMILLAN**  
CANCER SUPPORT

69

Projects supported in 2020 through the Sponsorships & Donations Committee



← **UCL Bartlett School of Architecture**

New MSci 4 year programme with £100,000 commitment starting 2020 over 4 years to support one student for fees and living costs, ensuring greater accessibility to higher education and property-related professions to those from disadvantaged backgrounds.



**Royal Academy of Music** →

Following our support of the renowned cellist Sheku Kanneh-Mason, we will enter into a new 4-year agreement in 2021 to support another student, ensuring that such a prestigious opportunity is open to all, regardless of background.



**Chickenshed**

Our three year partnership with Chickenshed has enabled such projects as Day One Big School.

# Our volunteering

Our volunteering programme has always been an integral part of our community engagement and all staff are encouraged to take time out to take part in a project that is connected to our portfolio or nearer to home.

Despite initially fearing that this would have to stop during 2020 we found ourselves busier than ever as local groups turned to technology and continued their services online.

Therefore we were able to take part in a variety of career insight events, CV feedback schemes, phone calls to the elderly, and even one in-person event in the autumn as we took part in the Great British September Clean.

# 14

Organisations we  
volunteered for in 2020



Derwent London take part in the Great British September Clean

"From the bottom of my heart I want to thank you for helping us get through this hard time. .... Please know, you've made our Christmas"

Beneficiary of the ELBA Toy Appeal 2020

# Supporting the NHS

It was of utmost importance to us that we provided whatever support we could to the NHS and key workers this year. The extra funds committed via the waived Directors' salaries in 2020 enabled us to support the NHS in a number of ways.

Donations to UCLH Charity and the 1928 Project ensured that hospital staff were provided for in practical terms with commercial fridges to store food donations and gift cards to assist with their food shopping around shift patterns.

We were really pleased to be able to provide 16 furnished flats at 80 Charlotte Street to front line workers at University College Hospital.

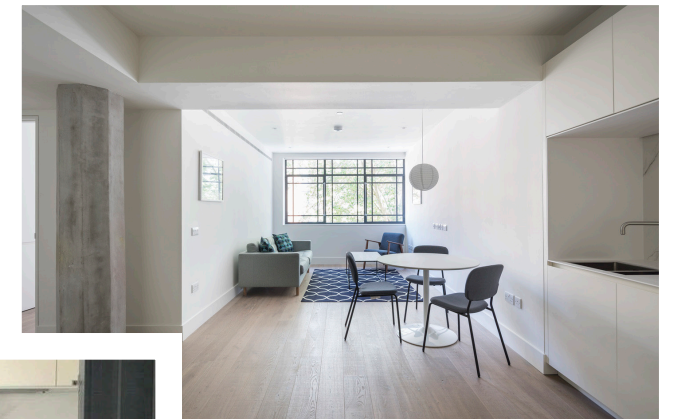
In recognition of the medical school students that stepped forward to volunteer at hospitals, GP surgeries and care homes we supported UCL's Medical Student Support Fund.



↑  
Charlotte Apartments W1

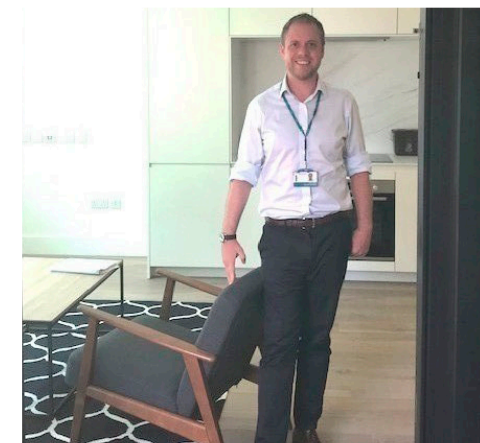


↑  
Final year medical students  
volunteering as part of the UCLH  
Covid-19 Response Team



↑  
Charlotte Apartments W1

Chris Dann, NHS divisional  
manager, surgery



# Overview



2020 will be the year that for many will be overshadowed by one thing; Covid-19. However we also need to remember the good; the goodwill of people who came together to support their communities and neighbourhoods, the organisations who remained opened to help the most vulnerable and the incredible efforts of the NHS.

Looking ahead we remain committed to supporting our neighbourhoods and ensuring that our business effects positive change for all.

↑  
The Spitz - Music and deep healing project at Bridgeside Lodge care home, Islington N1

Photo credit: Hannah Lovell; double bass: Henrik Jensen; piano/voice: Arthur Lea

## Community Fund

### 2020 - Fitzrovia & West End

**Soup Kitchen at the International Church** - Core costs to maintain the service

**Fitzrovia Youth in Action** - Young person's better choices project

**Mission Remission** - Online support group for cancer patients and survivors

**Foodcycle Marylebone** - Tackling food poverty

**Holcroft Court Residents Association** - Greening project on Carburton Street

**All Souls Clubhouse** - Core funding to maintain elderly lunch club service during Covid-19

**Mousetrap Theatre Projects** - Projects for Core funding during Covid-19

### Spring 2020 - Tech Belt

**Literacy Pirates** - Young authors' book project

**Foundation for Change** - Women's support group

**Coney Ltd** - Digital upskilling programme for young people

**Soapbox** - Multi-media project co-produced by local young people

**The Spitz Charitable Trust** - Music and deep healing post-Covid for care home residents

### Autumn 2020 - Tech Belt

**Providence Row** - Peer mentoring programme for the homeless

**Rich Mix Cultural Foundation** - Pic 'n' Mix: Rich Mix schools Film Education Programme

**Kunstraum** - Short film project for young BIPOC and LGBTQ+ communities

**KIDS** - Upgrade of outdoor lighting for a playground that supports disabled children and their families

**The Literacy Pirates** - Young Pirates film project 2021

**Calthorpe Community Garden** - Core funding

## Other charities and organisations supported in 2020

### Donations

Chickenshed  
Bartlett scholarship  
Norwood  
Junior Norwood  
Royal Academy of Music  
Young Camden Fund  
West End Community Trust  
Teenage Cancer Trust  
Geffrye Museum of the Home  
Microscope Ball in aid of Muscular Dystrophy  
Architects Benevolent Society  
Shooting Stars Childrens Hospices  
Westminster Pop Up Business School  
XLP computers for kids  
LandAid  
The Soup Kitchen  
The Story of Christmas  
Wytham Hall  
The Passage  
St Mungo's  
The Marylebone Project  
Welcome Trust Covid Zero  
Imperial Health - 1928 project  
UCLH  
Our Frontline  
UCL Medical Student Support Fund  
The Francis Crick Institute  
When you wish upon a star  
St John's Hospice  
Maggie's  
COSMIC at St Mary's  
Will Rutt  
CRUK  
Macmillan  
The Barbican Centre Trust  
St Martin in the Fields  
Rhyl Primary  
Fitzrovia Community Centre  
Urban MBA  
All Change Arts  
Healthwatch Lambeth (Black Thrive)  
Juvenis  
All Souls Clubhouse  
Providence Row  
Mission Remission  
Cardboard Citizens  
West London Mission  
St Hilda's East Community Centre  
St Patrick's Church Soho  
Slade Adventure Playground  
Brixton Soup Kitchen  
Sir Simon Milton Foundation  
Anne Frank Trust

### Sponsorships

Westminster Property Association  
Open City  
New London Architecture  
BCO NextGen Awards  
Civic Trust  
Royal Academy of Arts

DERWENT  
LONDON

[derwentlondon.com](http://derwentlondon.com)

[community@derwentlondon.com](mailto:community@derwentlondon.com)

[derwentlondon.com/responsibility/social/communities](http://derwentlondon.com/responsibility/social/communities)

© Derwent London May 2021